

Connecting On the Move to Culture Next



The Cultural Mobility Connection

<http://on-the-move.org>



On the Move members gathering in Caernarfon Wales, UK

© Iolo Penri Photography, April 2024

ON THE MOVE

**International network
dedicated to artistic
and cultural mobility**

- Born in 2002, based in Brussels, Belgium and Paris, France
- 79 members based in 29 countries
- Mission to provide **regular, up-to-date and free information on mobility opportunities, conditions and funding, and to advocate for the value of cross-border cultural mobility**
- Ambitious multiannual programme to build the capacities of **local, regional, national, European and international stakeholders** for the sustainable development of our cultural ecosystems.

ON THE MOVE's

MEMBERS

79 members

29 countries and contexts

TYOLOGY:

- **Mobility funders** from arts councils to independent mobility funds (Nordic Culture Point, Arts Council of England, Canada Council for the Arts, Roberto Cimetta Fund etc.)
- **Information platforms** (such as TransArtists)
- **Mobility Info Points** (information providers on administrative issues related to mobility)
- **Arts organisations anchored in a context** but also active internationally (Mekong Cultural Hub, Arts and Theatre Institute, etc.)
- **Networks:** Trans Europe Halles, RES ARTIS, European Music Council, IETM etc.



| | | |
|--|-----------------------------------|---|
| Austria Art-Mobility-Austria | Belgium Cultuurloket | Czech Republic CzechMobility.info |
| France MobiCulture | Germany touring artists | Netherlands DutchCulture |
| Portugal Loja Lisboa Cultura | Slovenia Motovila | United Kingdom Arts Infopoint UK |
| USA Tamizdat | | |

Mobility Information Points (MIPs) are organisations that help artists and culture professionals with the administrative issues of cross-border mobility, through free information and consultation services. Key issues include visas, social insurance, taxes, and customs.

ON THE MOVE

thematic working groups

Home > Network

Working Groups

View Edit Revisions

The working groups are a place for On the Move's members to think and act together on the challenges facing the cultural mobility field.



(En)forced Mobility

The (En)forced Mobility working group shares practices, common actions, and advocacy tools in relation to artists or cultural professionals whose mobility is (en)forced – not purely voluntary.



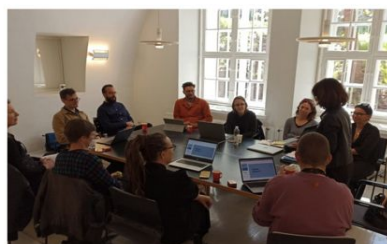
Green Context-specific Mobility

This group explores problems, solutions, ideas and projects related to green mobility – understanding it as a global, intersectional challenge.



International Professional Development Programmes

A group collaborating to improve the design and delivery of professional development programmes focused on international work.



Mobility Funders

Bringing together funders from different countries, this group aims to think collectively about the future of mobility funding – and the field as a whole.



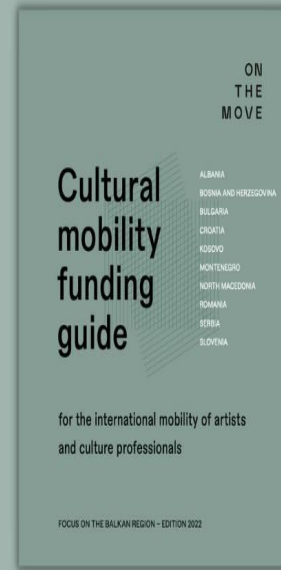
Mobility Information Points

Mobility Information Points (MIP) are information centres and/or websites who aim to tackle the administrative challenges artists and cultural professionals face when working across borders.

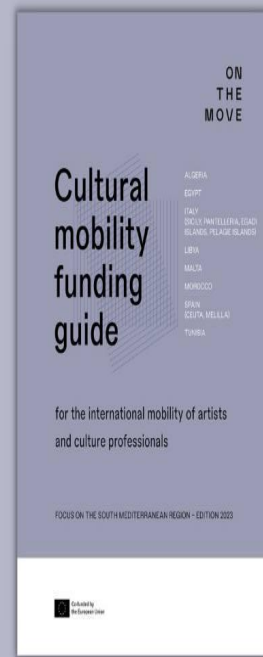
Music Mobility Funding - Focus on Europe



Cultural Mobility Funding in the Balkan Region



Cultural Mobility Funding in the South Mediterranean region



Are you looking for funding?

Check out the On the Move
funding guides!

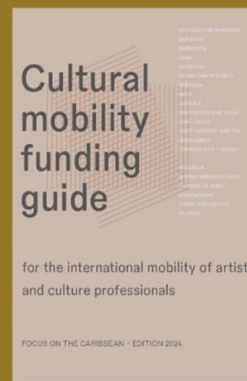
Guía de financiación: El Caribe

Para la movilidad
cultural
internacional de
artistas y
profesionales de la
cultura.



Caribbean Funding Guide

Mapping out grants
and support schemes
focusing on the
Caribbean to help
organisations and
arts workers to
engage with the
region.



ON
THE
MOVE



Open
opportunities
for funding...

News

🔿 Filter results

44 open calls

Sort by: Date added ⚡

Opportunity type ▾

Destination country ▾

Online or in-person ▾

For individuals or collectives ▾

Artform or discipline ▾

Thematic area ▾



Gasworks: Residencies for Artists Based in Central America, Argentina and Brazil 2025 (UK)

Residencies

Deadline: 28 Oct 2024 / 4 Nov 2024

👤 In-person



Bioart Society: deCYPHer and Bioindustry 4.0 Artists in Residence 2025 (Belgium, Netherlands)

Residencies

Deadline: 23 Oct 2024

🔗 Hybrid



Viborg Kunsthøjs: Riddergade Artist-in-Residence 2025 (Denmark)

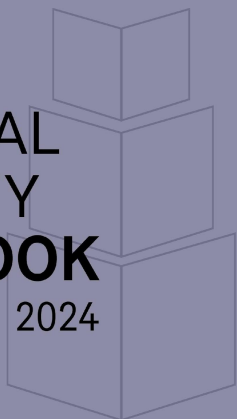
Residencies

Deadline: 24 Nov 2024

👤 In-person

ON
THE
MOVE

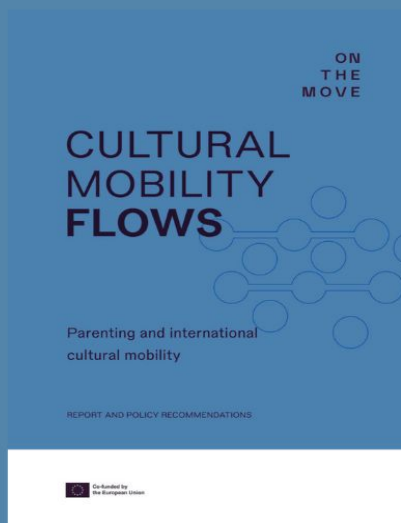
CULTURAL MOBILITY YEARBOOK 2024



Co-funded by
the European Union

Report: Parenting and International Cultural Mobility

A focus on
parenting, care
and cultural
mobility:
a state of the art

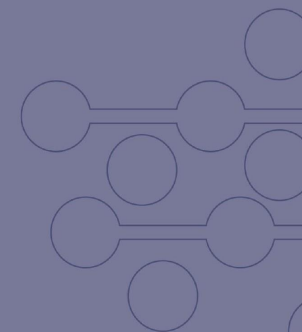


ON
THE
MOVE

CULTURAL MOBILITY FLOWS

Mental Health,
Well-being and International
Cultural Mobility

REPORT AND POLICY RECOMMENDATIONS

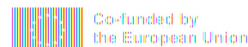


Co-funded by
the European Union

CULTURAL
MOBILITY
FLOWS

The International Mobility of Diaspora
Artists and Culture Professionals

REPORT AND POLICY RECOMMENDATIONS



Co-funded by
the European Union

Partnership through:

Sharing of calls and opportunities

Info sessions on European and international cultural mobility opportunities

SHIFT eco-certification for networks

Capacity development programmes to develop internationally

Upcoming webinar and Cultural Mobility Flows Report in 2026, part of
On the Move's new project for 2025-2028, **New Solidarities: ECOC and City-led cultural mobility**

Membership (Culture Next, cities etc.)

Mobility Funding Guides:

<https://on-the-move.org/resources/funding>

International open calls & opportunities:

<https://on-the-move.org/news>

Research publications:

<https://on-the-move.org/resources/library>

Stay in touch:

Marie Le Sourd: mobility@on-the-move.org